

**It's not too late to book your
holiday party at the Zoo!**
sales@blankparkzoo.org or 515.974.2533

WINTER HOURS

Yes, Blank Park Zoo is open all year round!
10 a.m. - 3 p.m. 7 days a week

Blank Park Zoo is to
of the natural
vation, education

Summer 2011



IOWA'S WILDEST ADVENTURE

Blank Park Zoo Foundation

7401 SW 9th Street | Des Moines, IA 50315

NON PROFIT ORG
U.S. POSTAGE PAID
DES MOINES, IA
PERMIT NO. 5754

Zoo Tracks

That's a Big Baby!

Well on her way to passing the height of most WNBA players before even taking a step...

Sabra (Sah-Brah), a healthy 147 pound, 5 foot 9 inches tall, female giraffe calf was welcomed into the Blank Park Zoo family on September 25, 2010. Both Sabra and Mom, Samburu, are doing well.

Giraffes give birth in a standing position and the calves drop nearly 6 feet to the ground. The six foot fall does not hurt the calf but actually stimulates the baby to take its first breath. On average, giraffe calves are 150 pounds and 6 feet tall. They are able to stand within 30 minutes of birth, which allows them to nurse within the first hour.

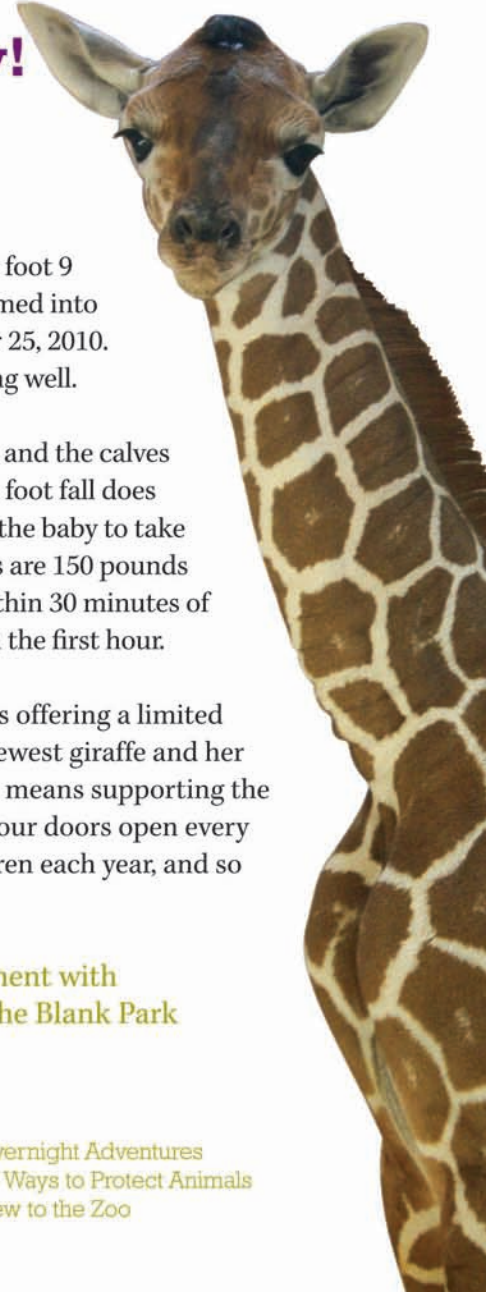
In celebration of Sabra's birth, the Zoo is offering a limited edition brass ornament featuring our newest giraffe and her mother. Supporting the Blank Park Zoo means supporting the care for thousands of animals, keeping our doors open every day of the year, educating 130,000 children each year, and so much more.

Receive your commemorative ornament with any contribution of \$35 or more to the Blank Park Zoo Foundation.

inside

Limited Edition Holiday Ornament
Animal Nutrition
Supporter Snapshot

Overnight Adventures
10 Ways to Protect Animals
New to the Zoo





Giraffe Ornament

Make a contribution* to Blank Park Zoo and receive your commemorative ornament celebrating the life of Sabra!

GIVE TODAY - TO GET YOUR LIMITED EDITION ORNAMENT!

For more information, or to make a contribution:

Call: 515.974.2588

Email: development@blankparkzoo.org

Visit: www.blankparkzoo.com

*Gift received with a charitable contribution of \$35 or more. Not valid on membership, admission or gift shop sales. Available while supplies last.

Looking for a unique gift this holiday season?

The Zoo From You!

A membership to Blank Park Zoo is a unique and wonderful gift for friends, family, neighbors, and so many more! Receive your holiday lion with any membership purchase now through December 15, 2010* - something to add a "ROAR" to your holiday!

*additional fee for shipping, or can be picked up at Blank Park Zoo.

515.974.2600 | www.blankparkzoo.com

Animal Nutrition

Feeding Blank Park Zoo's animals is no small feat. With each of our 183 species requiring an exclusive diet, from 30,000 pounds of fish annually just for the sea lions and penguins to mice for our snakes, eagles and owl. While it is a massive undertaking, feeding more than 3,000 animals is also a precise operation. For many, food is weighed out to the gram to ensure our animals receive exactly the right amount and type of food necessary for a well-balanced diet. While many are special treats, Zoo animals eat many items you might find in your own diet; carrots, lettuce, fish, oranges, beef, popcorn, apples, honey, corn on the cob, raisins, grapes, strawberries, peanuts, sunflower seeds, Cheerios, peas, broccoli, beans, rice... the list goes on and on.



Plush Lion 10 inches

BUY A MEMBERSHIP TODAY AND GET ME FREE!

Online, by phone or at Blank Park Zoo.

Supporter Snapshot

Something For Everyone

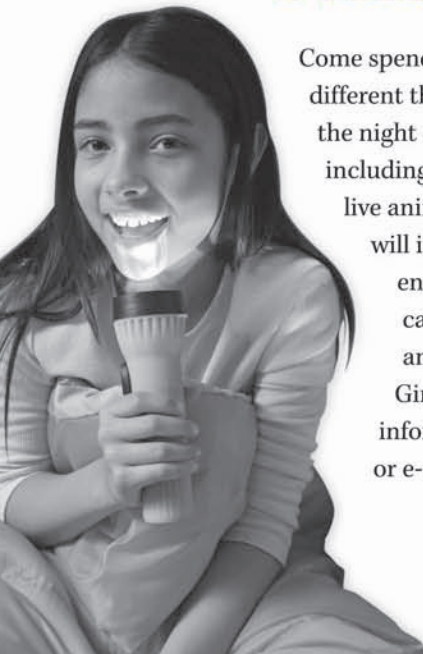


Blank Park Zoo has become increasingly popular every year because of its fabulous supporters, and professional, passionate leadership. The Zoo's Board of Directors are committed to the mission of the Zoo, and to continuing to be a powerful part of Iowa communities. The perfect example of the love, dedication and excitement our Board provides to the Zoo is Matt Fryar. For many years

Matt, his wife Bridget, and their family have enjoyed many adventures at Iowa's only Zoo.

Overnight Adventures

Come spend the night at the Zoo! Choose from four different themes for your overnight adventure. Start the night off with three hours of programming including fun games, scavenger hunts, and live animal encounters. The next morning will include breakfast, another live animal encounter, and admittance to the Zoo. We can accommodate up to 50 kids of any age and can customize a program that will earn Girl Scout and Boy Scout badges. For more information call Amy Kopatich 515-974-2558 or e-mail amkopatich@blankparkzoo.org.



“

Why do you love the Zoo?

I enjoy nature and seeing new things. The Zoo gives families a chance to see things they would otherwise not see. It also gives families a chance to spend time together away from their ordinary schedule at a reasonable cost.

What do you want to see in the future?

It is always nice to see more exhibits. Our goal is to expand, but we need to make sure it is quality expansion with exhibits people are interested in.

What is your favorite thing at the Zoo?

I like the giraffes - mazing animals. I am also up for a good train ride anytime.

Why is the Zoo important to the Community?

A zoo is important for many reasons: 1. It gives local businesses recruiting new employees another great example of what our area has to offer. 2. It has educational value. The Zoo is not just about looking at animals, but about how conservation and the study of animals and learning from them is important. 3. It is a great way for families to get out of the house and enjoy the outdoors.

Why are you a Board Member?

I strongly believe in giving back to the community. The Zoo is a vital part of Iowa for families, schools, and business. I also believe the Zoo has some of the most dedicated employees around that strive to get better every day. I like to be around those type of people.

”



Animal Adventure Guide

Next time you visit Blank Park Zoo don't forget to pick up the Zoo's newest publication, the *Wild Animal Adventure Guide*! This exciting new piece will take you and your family through a guided tour of the animals found at Blank Park Zoo, and provide you with 40 pages of educational games, crafts, facts, fun animal snacks and more! For only \$3.00 you can support our mission and enhance your Zoo adventure.



Events

Santa at the Zoo

Santa will be at the Zoo! Bring the whole family to Blank Park Zoo to enjoy a morning of holiday cheer. After sharing your wish list with Santa and enjoying a delicious treat, explore the wonders of our indoor tropics. Bring along your scarf and hat and wish all our winter animals a "Happy Holiday".

Evening with Art for Gorillas

Blank Park Zoo is pleased to welcome Julie Ghrist, a Des Moines native, who has started a Rwanda based program dedicated to teaching schoolchildren about the importance of maintaining a healthy environment for both people and animals, and instilling in them an understanding and respect for themselves,

their peers, and the natural world. Join Blank Park Zoo and Julie to learn about *Art for Gorillas*' many important programs.

For more information on these and other events visit www.blankparkzoo.com today!

QUESTION?

What are 10 things you can do to protect animals?

- 1 Learn about endangered species in your area - the first step to protecting is learning why animals are important.
- 2 Make your home wildlife friendly by putting out bird feeders.
- 3 Provide habitat for wildlife by planting native vegetation in your yard.
- 4 Minimize use of herbicides and pesticides as they may be hazardous to wildlife.
- 5 Reduce the amount of water you use in your home and garden.
- 6 Place decals or decorations in your windows to deter bird collisions.
- 7 Slow down when driving - many animals live in developed areas.
- 8 Recycle and buy sustainable products such as recycled paper and shade-grown coffee to save the rainforest.
- 9 Never purchase products made from endangered species like ivory, coral or tortoise shell.
- 10 Visit the Blank Park Zoo and learn about the many conservation projects in which we participate.



Be the change you wish to see in the world!

What can you do for the Zoo?

This year, the Blank Park Zoo will be celebrating the holiday season with a **Giving Tree**. As you are thinking of the gifts you will purchase for family and friends this holiday season, we ask you to keep the Zoo's animals in mind as well, by participating in our **Giving Tree**.

It's Easy as 1-2-3!



- 1 Pick up your favorite Zoo animal's holiday wish at the Zoo or by visiting www.blankparkzoo.com.
- 2 Purchase the item on the tag.
- 3 Bring your gift to the Zoo anytime in December.

Return to the Zoo's website to see photos of your wild animal friends enjoying their new toys!

On the Road

Education is a key focus of the Zoo's operations, with learning opportunities for all ages. Last year, our off-site programs reached over 25,000 people. Traveling throughout the state to spread our education to all families and children is important. Thanks to the work of Blank Park Zoo Ambassadors, and to the generosity of a few community minded organizations, the Zoo is now equipped with a new educational vehicle allowing for additional programs! Look for the Zoo in your community!



Made possible by:

Toyota of Des Moines | Etc! Graphics, Inc. | Digital Suburbia Photography & Design

Thank You!

On September 29, over 1,800 people gathered at Blank Park Zoo to enjoy Jack Hanna and his amazing animal friends. We sincerely thank Nationwide for making this special event possible.



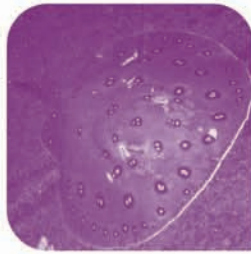
The Zoo hosted its 3rd Annual Uptown Hoedown raising \$75,000 for our many special programs. Thank you to our sponsors, guests and volunteers!

Bob Elgin will forever be a part of our Zoo. Thank you to his family and friends for remembering the Zoo during this difficult time.





New To The Zoo



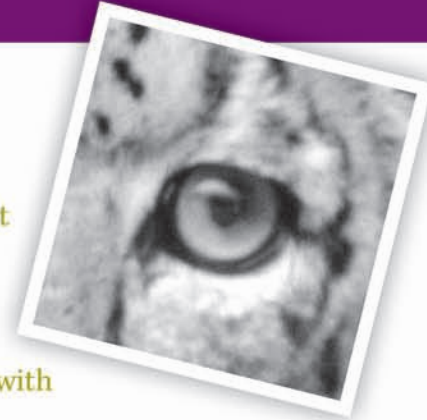
Zoo Members receive a 10% discount at Johnny's Italian Steakhouse, The Iowa Machine Shed, and other Heart of America Properties.

Vulture
Sting Ray
Baby Cassowary
Caterpillar



Who Am I?

- » While my body only measures 4 -5 feet in length, my tail is over 3 feet long.
- » I am a wonderful climber.
- » As a solitary animal, I come together with others of my kind only to mate.
- » Once hunted to extinction, my counterparts remain endangered in the wild.



answer - snow leopard

F P P R I K V T L I I J Y T V
 S E P D U J J C T Q X N K K W
 Z P B A G P N T O R T O I S E
 I K T M T H L H E O E T T S U
 L Z F A H M E N I U G N E P X
 N L L L G K N Y W E Y B F U B
 Y B A L L A W M U J E K R W P
 N L M V Y G W S N A K E L K R
 N S I G U F N M H F N I Q F H
 W O N S C Q Z R Q I O H E Q K
 F D G U E A J O K S M S K W Q
 K T O W T P S Q U H O T J Y B
 Y E O O T M L U Q K O X R H D
 E I T G J T I G E R K R X C S
 Y T L V U D U Z W L X G D A D

FISH
 PENGUIN
 SNOW
 MONKEY
 TORTOISE
 WALLABY
 TIGER
 LLAMA
 SNAKE
 FLAMINGO